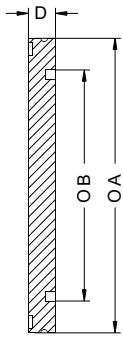




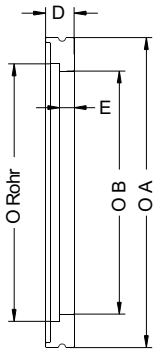
RV

ISO-K KOMPONENTEN



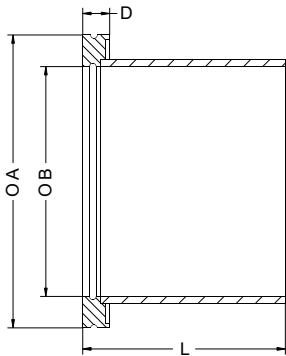
Blindflansch ISO-K						Wst.-Nr.: 1.4306 (304L)	
Nennweite	Maße in mm	Ø A	Ø B	D	Artikel	€/Stück	
DN 63 ISO-K		95	70	12	BF 63-K	34,-	
DN 100 ISO-K		130	102	12	BF 100-K	47,-	
DN 160 ISO-K		180	153	12	BF 160-K	85,-	
DN 200 ISO-K		240	213	12	BF 200-K	160,-	
DN 250 ISO-K		290	261	12	BF 250-K	210,-	
DN 320 ISO-K		370	318	17	BF 320-K	490,-	
DN 400 ISO-K		450	400	17	BF 400-K	820,-	
DN 500 ISO-K		550	501	17	BF 500-K	aA	
DN 630 ISO-K		690	651	17	BF 630-K	aA	

☐ DN 400 - DN 630 ISO-K ohne Nut für Sprengung



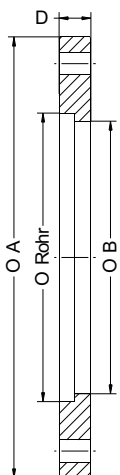
Schweißflansch ISO-K							Wst.-Nr.: 1.4306 (304L)	
Nennweite	Maße in mm	Rohr	Ø A	Ø B	D	E	Artikel	€/Stück
DN 63 ISO-K		76 x 3	95	70	12	6	SF 63-K	27,-
DN 100 ISO-K		108 x 3	130	102	12	6	SF 100-K	41,-
DN 160 ISO-K		159 x 3	180	153	12	6	SF 160-K	93,-
DN 200 ISO-K		219 x 3	240	213	12	6	SF 200-K	148,-
DN 250 ISO-K		267 x 3	290	261	12	6	SF 250-K	175,-
DN 320 ISO-K		324 x 3	370	318	17	6	SF 320-K	465,-
DN 400 ISO-K		406 x 3	450	400	17	6	SF 400-K	690,-
DN 500 ISO-K		508 x 4	550	500	17	6	SF 500-K	aA
DN 630 ISO-K		658 x 4	690	650	17	6	SF 630-K	aA

☐ DN 400 - DN 630 ISO-K ohne Nut für Sprengung



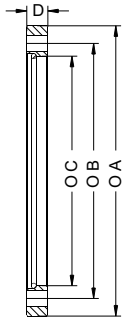
Flansch mit Rohr ISO-K							Wst.-Nr.: 1.4306 (304L)	
Nennweite	Maße in mm	Rohr	Ø A	Ø B	D	L	Artikel	€/Stück
DN 63 ISO-K		76 x 3	95	70	12	100	SR 63-K	85,-
DN 100 ISO-K		108 x 3	130	102	12	100	SR 100-K	105,-
DN 160 ISO-K		159 x 3	180	153	12	100	SR 160-K	185,-
DN 200 ISO-K		219 x 3	240	213	12	100	SR 200-K	275,-
DN 250 ISO-K		267 x 3	290	261	12	100	SR 250-K	360,-
DN 320 ISO-K		324 x 3	370	318	17	100	SR 320-K	aA
DN 400 ISO-K		406 x 3	450	400	17	100	SR 400-K	aA
DN 500 ISO-K		508 x 4	550	500	17	100	SR 500-K	aA
DN 630 ISO-K		658 x 4	690	650	17	100	SR 630-K	aA

☐ DN 400 - DN 630 ISO-K ohne Nut für Sprengung

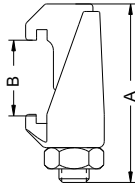


Schweißflansch ISO-F						Wst.-Nr.: 1.4306 (304L)	
Nennweite	Maße in mm	Rohr	Ø A	Ø B	D	Artikel	€/Stück
DN 63 ISO-F		76 x 3	130	70	12	SF 63-F	75,-
DN 100 ISO-F		108 x 3	165	102	12	SF 100-F	110,-
DN 160 ISO-F		159 x 3	225	153	16	SF 160-F	182,-
DN 200 ISO-F		219 x 3	285	213	16	SF 200-F	280,-
DN 250 ISO-F		267 x 3	335	261	16	SF 250-F	420,-
DN 320 ISO-F		324 x 3	425	318	20	SF 320-F	820,-
DN 400 ISO-F		406 x 3	510	400	20	SF 400-F	aA

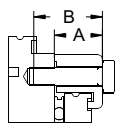
Blindflansch ISO-F					Wst.-Nr.: 1.4306 (304L)	
Nennweite	Maße in mm	Ø A	Ø B	D	Artikel	€/Stück
DN 63 ISO-F		130	70	12	BF 63-F	75,-
DN 100 ISO-F		165	102	12	BF 100-F	110,-
DN 160 ISO-F		225	153	16	BF 160-F	182,-
DN 200 ISO-F		285	213	16	BF 200-F	280,-
DN 250 ISO-F		335	261	16	BF 250-F	420,-
DN 320 ISO-F		425	318	20	BF 320-F	740,-
DN 400 ISO-F		510	400	20	BF 400-F	aA



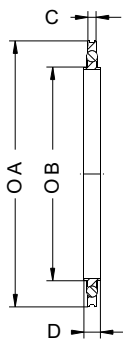
Überwurfflansch mit Sprengring							Wst.-Nr.: 1.4306 (304L)	
Flanschtyp	Maße in mm	Schrauben	ØA	ØB	ØC	D	Artikel	€ / Stück
DN 63 ISO-K		4 x M8	130	110	96	12	Ü 63-K	60,-
DN 100 ISO-K		8 x M8	165	145	131	12	Ü 100-K	85,-
DN 160 ISO-K		8 x M10	225	200	181	16	Ü 160-K	135,-
DN 200 ISO-K		12 x M10	285	260	241	16	Ü 200-K	170,-
DN 250 ISO-K		12 x M10	335	310	291	16	Ü 250-K	230,-



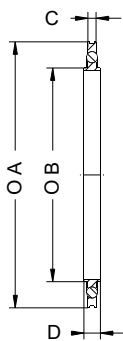
Klammerschraube ISO-K					Stahl verzinkt	
Nennweite	Maße in mm	A	B	Gewinde	Artikel	€ / Stück
DN 63 - 250 ISO-K		60	17 - 27	M10	KS 63/250-K	4,80
DN 320 - 500 ISO-K		75	27 - 39	M12	KS 320/500-K	8,50
DN 630 ISO-K		85	30 - 46	M12	KS 630-K	18,00



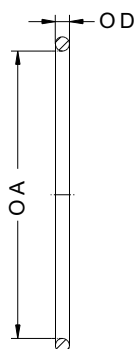
ISO-K Pratze					Stahl verzinkt	
Nennweite	Maße in mm	A	B	Gewinde	Artikel	€ / Stück
DN 63 / 100 ISO-K		22,5	35	M8	P 63/100-K	3,90
DN 160 / 250 ISO-K		23	40	M10	P 160/250-K	4,50
DN 320 / 500 ISO-K		36,5	50	M12	P 320/500-K	10,80
DN 630 ISO-K		41,5	55	M12	P 630-K	aA



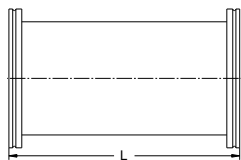
Dichtring ISO						Edelstahl / Viton	
Nennweite	Maße in mm	ØA	ØB	C	D	Artikel	€ / Stück
DN 63 ISO		94	70	3,9	8	DEV 63	25,00
DN 100 ISO		128	102	3,9	8	DEV 100	35,00
DN 160 ISO		179	153	3,9	8	DEV 160	50,00
DN 200 ISO		239	213	3,9	8	DEV 200	80,00
DN 250 ISO		287	261	3,9	8	DEV 250	100,00
DN 320 ISO		358	318	5,6	14	DEV 320	aA
DN 400 ISO		440	400	5,6	14	DEV 400	aA
DN 500 ISO		541	501	5,6	14	DEV 500	aA
DN 630 ISO		691	651	5,6	14	DEV 630	aA



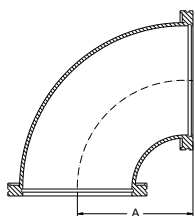
Dichtring ISO						Al / Viton	
Nennweite	Maße in mm	ØA	ØB	C	D	Artikel	€ / Stück
DN 63 ISO		94	70	3,9	8	DAV 63	18,50
DN 100 ISO		128	102	3,9	8	DAV 100	21,50
DN 160 ISO		179	153	3,9	8	DAV 160	32,50
DN 200 ISO		239	213	3,9	8	DAV 200	54,00
DN 250 ISO		287	261	3,9	14	DAV 250	65,00
DN 320 ISO		358	318	5,6	14	DAV 320	105,00
DN 400 ISO		440	400	5,6	14	DAV 400	165,-
DN 500 ISO		541	501	5,6	14	DAV 500	180,-
DN 630 ISO		691	651	5,6	14	DAV 630	230,-



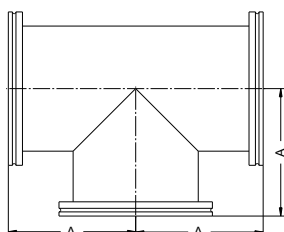
Ersatz O-Ring ISO				Viton		
Nennweite	Maße in mm	ØA	D	Artikel	€ / Satz	
DN 63 ISO	Satz=5Stück		76	5,3	OV 63	40,-
DN 100 ISO	Satz=5Stück		107	5,3	OV 100	60,-
DN 160 ISO	Satz=5Stück		158	5,3	OV 160	85,-
DN 200 ISO	Satz=5Stück		221	5,3	OV 200	120,-
DN 250 ISO	Satz=5Stück		253	5,3	OV 250	140,-
DN 320 ISO	Satz=2Stück		330	7	OV 320	140,-
DN 400 ISO	Satz=2Stück		405	7	OV 400	170,-
DN 500 ISO	Satz=2Stück		507	7	OV 500	200,-
DN 630 ISO	Satz=2Stück		659	7	OV 630	260,-



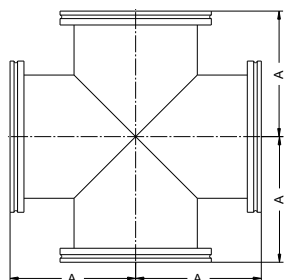
Zwischenstück ISO-K				Wst.-Nr.: 1.4306 (304L)	
Nennweite	Maße in mm	L	Artikel	€ / Stück	
DN 63 ISO-K		100	Z 63-K	165,-	
DN 100 ISO-K		100	Z 100-K	245,-	
DN 160 ISO-K		100	Z 160-K	320,-	
DN 200 ISO-K		100	Z 200-K	aA-	
DN 250 ISO-K		100	Z 250-K	aA-	



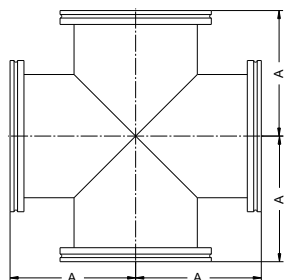
Bogen/Winkel 90° ISO-K				Wst.-Nr.: 1.4306 (304L)	
Nennweite	Maße in mm	A	Artikel	€ / Stück	
DN 63 ISO-K Bogen		103	B 63-K	110,-	
DN 100 ISO-K Bogen		148,5	B 100-K	220,-	
DN 160 ISO-K Winkel		146,5	W 160-K	470,-	
DN 200 ISO-K Winkel		178	W 200-K	aA	
DN 250 ISO-K Winkel		208	W 250-K	aA	



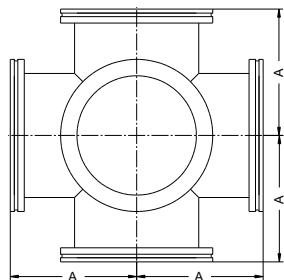
T - Stück ISO-K				Wst.-Nr.: 1.4306 (304L)		
Nennweite	Maße in mm	A	Artikel	€ / Stück		
DN 63 ISO-K		103	T 63-K	230,-		
DN 100 ISO-K		131,5	T 100-K	320,-		
DN 160 ISO-K		163,5	T 160-K	720,-		
DN 200 ISO-K		Rohr 206x3	196,5	T 200-K	aA	
DN 250 ISO-K		Rohr 256x3	246,5	T 250-K	aA	



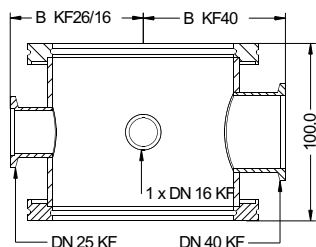
Kreuzstück ISO-K				Wst.-Nr.: 1.4306 (304L)		
Nennweite	Maße in mm	A	Artikel	€ / Stück		
DN 63 ISO-K		103	K 63-K	365,-		
DN 100 ISO-K		131,5	K 100-K	530,-		
DN 160 ISO-K		163,5	K 160-K	980,-		
DN 200 ISO-K		Rohr 206x3	196,5	K 200-K	aA	
DN 250 ISO-K		Rohr 256x3	246,5	K 250-K	aA	



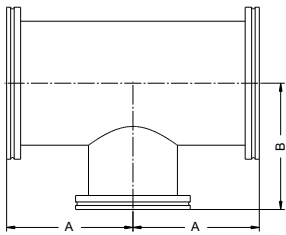
Kreuzstück 5-fach ISO-K				Wst.-Nr.: 1.4306 (304L)		
Nennweite	Maße in mm	A	Artikel	€ / Stück		
DN 63 ISO-K		103	K 63-K5	aA		
DN 100 ISO-K		131,5	K 100-K5	aA		
DN 160 ISO-K		163,5	K 160-K5	aA		
DN 200 ISO-K		Rohr 206x3	196,5	K 200-K5	aA	
DN 250 ISO-K		Rohr 256x3	246,5	K 250-K5	aA	



Kreuzstück 6-fach ISO-K				Wst.-Nr.: 1.4306 (304L)		
Nennweite	Maße in mm	A	Artikel	€ / Stück		
DN 63 ISO-K		103	K 63-K6	510,-		
DN 100 ISO-K		131,5	K 100-K6	840,-		
DN 160 ISO-K		163,5	K 160-K6	1.420,-		
DN 200 ISO-K		Rohr 206x3	196,5	K 200-K6	aA	
DN 250 ISO-K		Rohr 256x3	246,5	K 250-K6	aA	

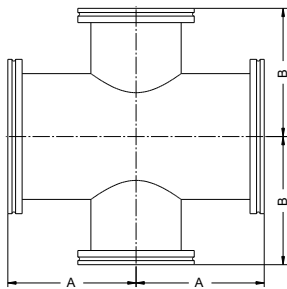
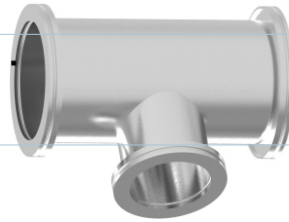


Mess-Kreuz ISO-K					Wst.-Nr.: 1.4306 (304L)	
Nennweite	Maße in mm	A	B KF16/25	B KF40	Artikel	€ / Stück
DN 63 ISO-K		88	75	80	MK 63-K	585,-
DN 100 ISO-K		100	90	95	MK 100-K	720,-
DN 160 ISO-K		100	120	125	MK 160-K	890,-
DN 250 ISO-K		100	170	175	MK 250-K	aA



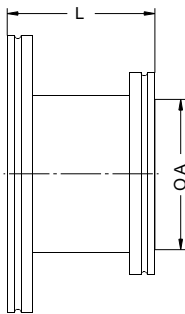
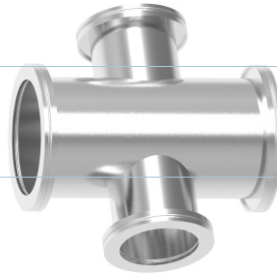
Reduzier T-Stück ISO-K

Nennweite	Maße in mm	A	B	Wst.-Nr.: 1.4306 (304L)	
				Artikel	€ / Stück
DN 100/63 ISO-K		101,5	88	RT 100/63-K	280,-
DN 160/63 ISO-K		121,5	123	RT 160/63-K	440,-
DN 160/100 ISO-K		121,5	123	RT 160/100-K	470,-
DN 200/63 ISO-K		121,5	146,5	RT 200/63-K	580,-
DN 200/100 ISO-K		121,5	146,5	RT 200/100-K	595,-
DN 200/160 ISO-K		121,5	146,5	RT 200/160-K	740,-
DN 250/63 ISO-K		121,5	166,5	RT 250/63-K	660,-
DN 250/100 ISO-K		121,5	166,5	RT 250/100-K	720,-
DN 250/160 ISO-K		121,5	166,5	RT 250/160-K	825,-
DN 250/200 ISO-K		151,5	176,5	RT 250/200-K	aA



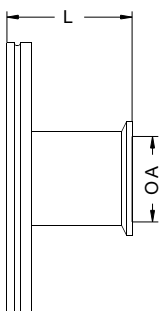
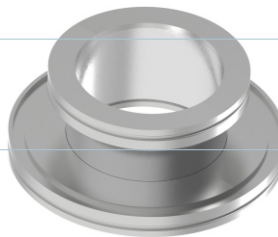
Reduzier - Kreuz ISO-K

Nennweite	Maße in mm	A	B	Wst.-Nr.: 1.4306 (304L)	
				Artikel	€ / Stück
DN 100/63 ISO-K		101,5	88	RK 100/63-K	460,-
DN 160/63 ISO-K		121,5	123	RK 160/63-K	630,-
DN 160/100 ISO-K		121,5	123	RK 160/100-K	710,-
DN 200/63 ISO-K		121,5	146,5	RK 200/63-K	810,-
DN 200/100 ISO-K		121,5	146,5	RK 200/100-K	890,-
DN 200/160 ISO-K		121,5	146,5	RK 200/160-K	1.150,-
DN 250/63 ISO-K		121,5	166,5	RK 250/63-K	950,-
DN 250/100 ISO-K		121,5	166,5	RK 250/100-K	1.050,-
DN 250/160 ISO-K		121,5	166,5	RK 250/160-K	1.250,-
DN 250/200 ISO-K		151,5	176,5	RK 250/200-K	aA



Reduzierstück ISO-K

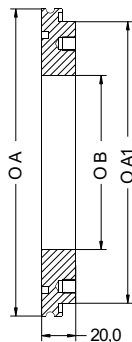
Nennweite	Maße in mm	A	L	Wst.-Nr.: 1.4306 (304L)	
				Artikel	€ / Stück
DN 100 /63 ISO-K		70,2	50	RS 100/63-K	150,-
DN 160 /63 ISO-K		70,2	50	RS 160/63-K	205,-
DN 160 /100 ISO-K		102,2	50	RS 160/100-K	245,-
DN 200 /63 ISO-K		70,2	50	RS 200/63-K	305,-
DN 200 /100 ISO-K		102,2	50	RS 200/100-K	360,-
DN 200 /160 ISO-K		153,2	50	RS 200/160-K	440,-
DN 250 /63 ISO-K		70,2	50	RS 250/63-K	340,-
DN 250 /100 ISO-K		102,2	50	RS 250/100-K	390,-
DN 250 /160 ISO-K		153,2	50	RS 250/160-K	490,-
DN 250 /200 ISO-K		213,2	50	RS 250/200-K	aA



Übergangsstück ISO-K / KF

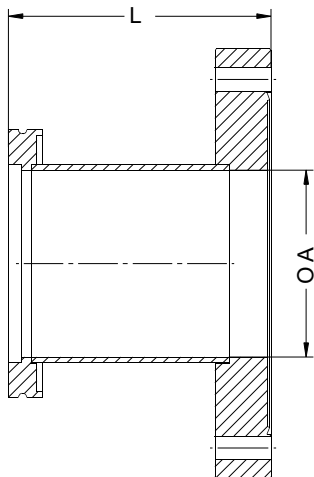
Nennweite	Maße in mm	Ø A	L	Wst.-Nr.: 1.4306 (304L)	
				Artikel	€ / Stück
DN 63 ISO-K / DN 16 KF		16	45	63ISO-16KF	73,-
DN 63 ISO-K / DN 25 KF		25	45	63ISO-25KF	90,-
DN 63 ISO-K / DN 40 KF		40	45	63ISO-40KF	92,-
DN 63 ISO-K / DN 50 KF		50	45	63ISO-50KF	105,-
DN 100 ISO-K / DN 16 KF		16	45	100ISO-16KF	98,-
DN 100 ISO-K / DN 25 KF		25	45	100ISO-25KF	115,-
DN 100 ISO-K / DN 40 KF		40	45	100ISO-40KF	120,-
DN 100 ISO-K / DN 50 KF		50	45	100ISO-50KF	150,-
DN 160 ISO-K / DN 40 KF		40	45	160ISO-40KF	160,-
DN 160 ISO-K / DN 50 KF		50	45	160ISO-50KF	180,-

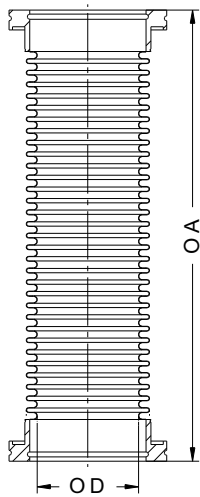




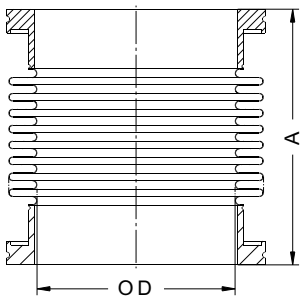
Reduzierflansch ISO-K					1.4306 (304L)	
Nennweite	Maße in mm	A	A1	B	Artikel	€ / Stück
DN 160 ISO-K / 63 ISO		180,0	130,0	70,2	RF 160/63-K	aA
DN 160 ISO-K / 100 ISO		180,0	165,0	102,2	RF 160/100-K	aA
DN 250 ISO-K / 63 ISO		290,0	130,0	70,2	RF 250/63-K	aA
DN 250 ISO-K / 100 ISO		290,0	165,0	102,2	RF 250/100-K	aA
DN 250 ISO-K / 160 ISO		290,0	225,0	153,2	RF 250/160-K	aA

CF - ISO-K Übergangsstücke		Rohr 1.4404	1.4306 (304L)		
Nennweite	Maße in mm	Ø A	L	Artikel	€ /Stck
DN 16 CF / DN 63 ISO-K		16	60	CF 16/63-K	120,-
DN 16 CF / DN 100 ISO-K		16	60	CF 16/100-K	140,-
DN 25 CF / DN 63 ISO-K		25	60	CF 25/63-K	145,-
DN 25 CF / DN 100 ISO-K		25	60	CF 25/100-K	165,-
DN 25 CF / DN 160 ISO-K		25	60	CF 25/160-K	210,-
DN 40 CF / DN 63 ISO-K		40,5	65	CF 40/63-K	155,-
DN 40 CF / DN 100 ISO-K		40,5	65	CF 40/100-K	175,-
DN 40 CF / DN 160 ISO-K		40,5	65	CF 40/160-K	220,-
DN 40 CF / DN 200 ISO-K		40,5	65	CF 40/200-K	320,-
DN 40 CF / DN 250 ISO-K		40,5	65	CF 40/250-K	390,-
DN 50 CF / DN 63 ISO-K		50	75	CF 50/63-K	175,-
DN 50 CF / DN 100 ISO-K		50	75	CF 50/100-K	195,-
DN 50 CF / DN 160 ISO-K		50	75	CF 50/160-K	240,-
DN 50 CF / DN 200 ISO-K		50	75	CF 50/200-K	340,-
DN 50 CF / DN 250 ISO-K		50	75	CF 50/250-K	410,-
DN 63 CF / DN 63 ISO-K		72	75	CF 63/63-K	155,-
DN 63 CF / DN 100 ISO-K	72	75	CF 63/100-K	210,-	
DN 63 CF / DN 160 ISO-K	72	75	CF 63/160-K	260,-	
DN 63 CF / DN 200 ISO-K	72	75	CF 63/200-K	360,-	
DN 63 CF / DN 250 ISO-K	72	75	CF 63/250-K	430,-	
DN 100 CF / DN 63 ISO-K	72	80	CF 100/63-K	225,-	
DN 100 CF / DN 100 ISO-K	102	80	CF 100/100-K	240,-	
DN 100 CF / DN 160 ISO-K	102	80	CF 100/160-K	355,-	
DN 100 CF / DN 200 ISO-K	102	80	CF 100/200-K	450,-	
DN 100 CF / DN 250 ISO-K	102	80	CF 100/250-K	520,-	
DN 125 CF / DN 63 ISO-K	72	80	CF 125/63-K	260,-	
DN 125 CF / DN 100 ISO-K	125	80	CF 125/100-K	295,-	
DN 125 CF / DN 160 ISO-K	125	80	CF 125/160-K	420,-	
DN 125 CF / DN 200 ISO-K	125	80	CF 125/200-K	550,-	
DN 125 CF / DN 250 ISO-K	125	80	CF 125/250-K	590,-	
DN 160 CF / DN 63 ISO-K	72	80	CF 160/63-K	280,-	
DN 160 CF / DN 100 ISO-K	102	80	CF 160/100-K	310,-	
DN 160 CF / DN 160 ISO-K	153	80	CF 160/160-K	360,-	
DN 160 CF / DN 200 ISO-K	153	80	CF 160/200-K	570,-	
DN 160 CF / DN 250 ISO-K	153	80	CF 160/250-K	650,-	
DN 200 CF / DN 63 ISO-K	72	80	CF 200/63-K	400,-	
DN 200 CF / DN 100 ISO-K	102	80	CF 200/100-K	450,-	
DN 200 CF / DN 160 ISO-K	153	80	CF 200/160-K	500,-	
DN 200 CF / DN 200 ISO-K	200	80	CF 200/200-K	580,-	
DN 200 CF / DN 250 ISO-K	200	80	CF 200/250-K	780,-	
DN 250 CF / DN 63 ISO-K	72	80	CF 250/63-K	520,-	
DN 250 CF / DN 100 ISO-K	102	80	CF 250/100-K	560,-	
DN 250 CF / DN 160 ISO-K	153	80	CF 250/160-K	690,-	
DN 250 CF / DN 200 ISO-K	213	80	CF 250/200-K	750,-	
DN 250 CF / DN 250 ISO-K	250	80	CF 250/250-K	650,-	

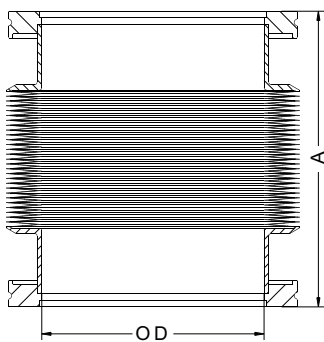




Wellschläuche ISO-K				Flansche 1.4306 / Schlauch 1.4541	
Nennweite	Maße in mm	A	Ø D	Artikel	€ / Stück
DN 63 ISO-K		250	63	WS 63/250-K	235,-
DN 63 ISO-K		500	63	WS 63/500-K	250,-
DN 63 ISO-K		750	63	WS 63/750-K	280,-
DN 63 ISO-K		1000	63	WS 63/1000-K	290,-
DN 100 ISO-K		250	100	WS 100/250-K	330,-
DN 100 ISO-K		500	100	WS 100/500-K	345,-
DN 100 ISO-K		750	100	WS 100/750-K	360,-
DN 100 ISO-K		1000	100	WS 100/1000-K	380,-

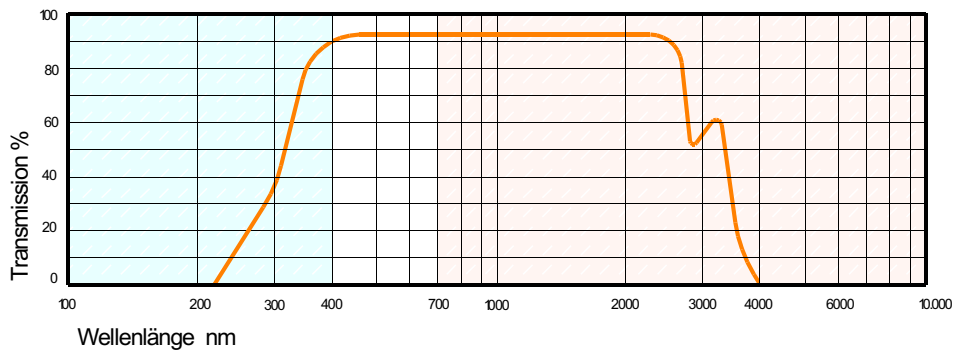
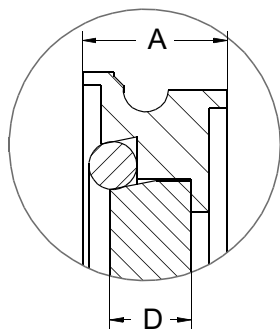
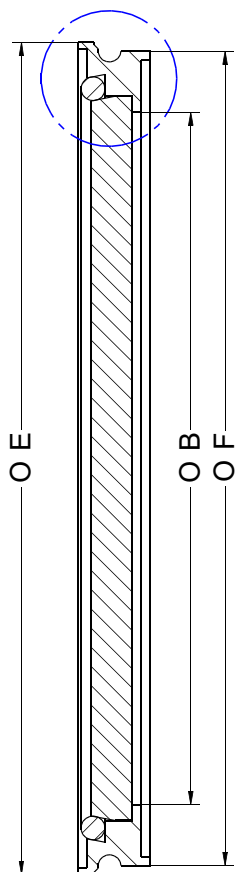


Wellbälge ISO-K				Flansche 1.4306 / Balg 1.4541	
Nennweite	Maße in mm	A	Ø D	Artikel	€ / Stück
DN 63 ISO-K		118-158	70	WB 63-K	155,-
DN 100 ISO-K		127-172	102	WB 100-K	240,-
DN 160 ISO-K		145-194	151	WB 160-K	510,-
DN 200 ISO-K		185-245	201	WB 200-K	990,-
DN 250 ISO-K		146-190	251	WB 250-K	aA
DN 320 ISO-K		160-250	318	WB 320-K	aA
DN 400 ISO-K		200-230	400	WB 400-K	aA



Membranbälge ISO-K				Flansche 1.4306 / Balg 1.4404		
Nennweite	Maße in mm	Axialhub	Ø D	A	Artikel	€ /Stck
DN 63 ISO-K		25	70	75 - 100	MEM 63/25-K	495,-
DN 63 ISO-K		50	70	83 - 133	MEM 63/50-K	530,-
DN 63 ISO-K		75	70	89 - 164	MEM 63/75-K	610,-
DN 63 ISO-K		100	70	96 - 196	MEM 63/100-K	695,-
DN 63 ISO-K		150	70	111 - 261	MEM 63/150-K	850,-
DN 63 ISO-K		200	70	125 - 325	MEM 63/200-K	1.030,-
DN 100 ISO-K		25	102	78 - 103	MEM 100/25-K	690,-
DN 100 ISO-K		50	102	85 - 135	MEM 100/50-K	800,-
DN 100 ISO-K		75	102	91 - 166	MEM 100/75-K	910,-
DN 100 ISO-K		100	102	97 - 197	MEM 100/100-K	1.050,-
DN 100 ISO-K		150	102	110 - 260	MEM 100/150-K	1.250,-
DN 100 ISO-K		200	102	123 - 323	MEM 100/200-K	1.460,-
DN 160 ISO-K		25	150	81 - 106	MEM 160/25-K	980,-
DN 160 ISO-K		50	150	86 - 136	MEM 160/50-K	1.100,-
DN 160 ISO-K		75	150	91 - 166	MEM 160/75-K	1.250,-
DN 160 ISO-K		100	150	97 - 197	MEM 160/100-K	1.390,-
DN 160 ISO-K		150	150	108 - 258	MEM 160/150-K	1.650,-
DN 160 ISO-K		200	150	118 - 318	MEM 160/200-K	1.930,-

☐ 10.000 Zyklen

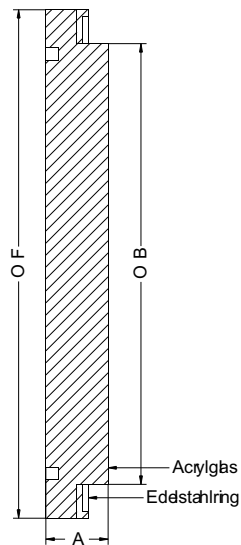


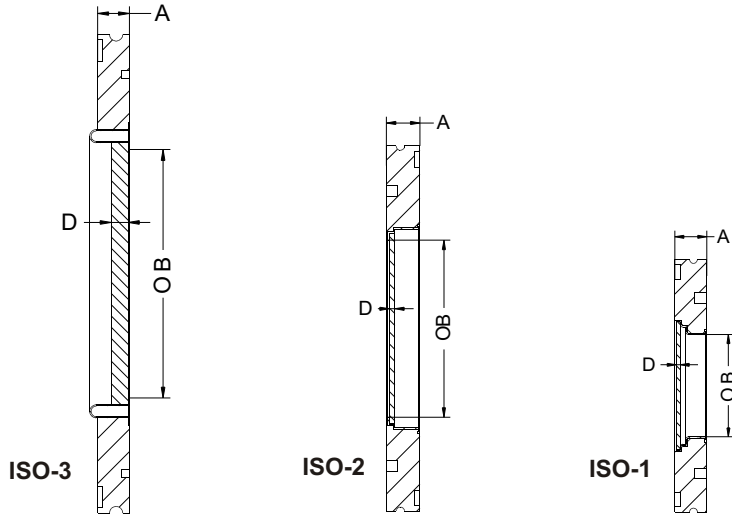
ISO-K Sichtfenster Kodial							Flansch 1.4301	
Nennweite	Maße in mm	A	Ø B	D	Ø E	Ø F	Artikel	€/ Stck
DN 63 ISO-K		14	70	4	99	95	FSK 63	140,-
DN 100 ISO-K		14	102	5	134	130	FSK 100	180,-
DN 160 ISO-K		14	153	2,5	184	180	FSK 160	260,-
DN 200 ISO-K		20	213	13	245	240	FSK 200	490,-

- ☐ Ausheiztemperatur max. 100°C
- ☐ Glas austauschbar
- ☐ Leckrate: <math> < 1 \times 10^9 \text{ mbar l s}^{-1}</math>, Druckbereich 1 bar bis 10^{-9} mbar
- ☐ Wst.-Nr.: Flansch 1.4301, Dichtung FPM, Glas Kodial

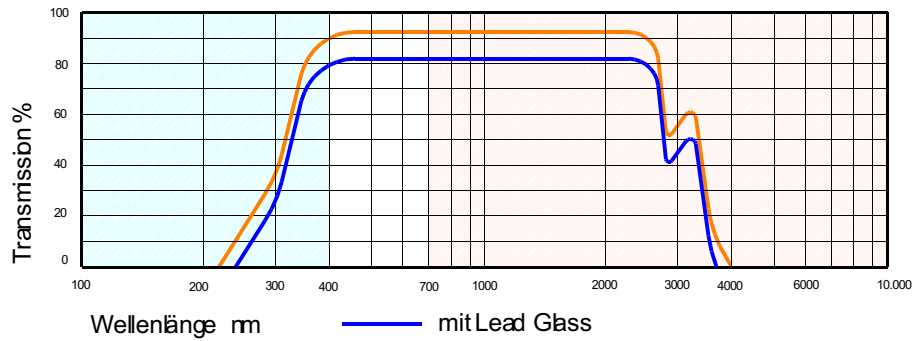
ISO-K Sichtfenster Acryl							Flansch 1.4301	
Nennweite	Maße in mm	A	Ø B	D	Ø E	Ø F	Artikel	€/ Stck
DN 63 ISO-K		14	71	-	-	95	SFAC 63	80,-
DN 100 ISO-K		15	106	-	-	130	SFAC 100	95,-
DN 160 ISO-K		22	156	-	-	180	SFAC 160	170,-
DN 200 ISO-K		22	216	-	-	240	SFAC 200	210,-
DN 250 ISO-K		22	264	-	-	290	SFAC 250	310,-
DN 320 ISO-K		25	342	-	-	370	SFAC 320	390,-

- ☐ Leckrate: $< 1 \times 10^9 \text{ mbar l s}^{-1}$, Druckbereich 1 bar bis 10^9 mbar
- ☐ Wst.-Nr.: Ring1.4301, Acrylglas





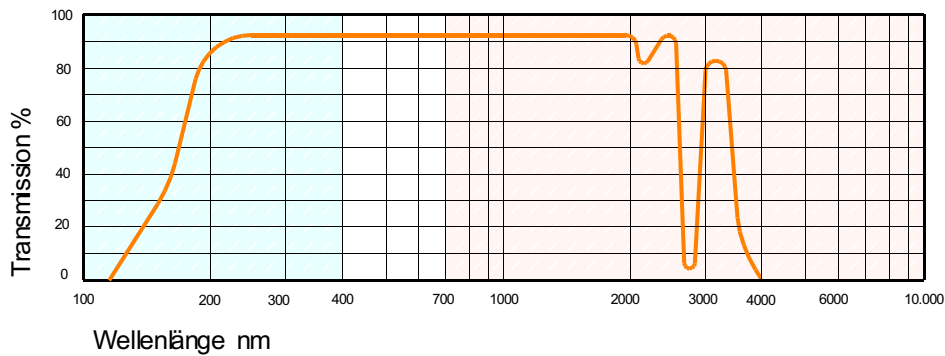
Kodial



ISO-K Sichtfenster Kodial / Kovar-Schweißring						Flansch 1.4306 (304L)	
Nennweite	Maße in mm	A	Ø B	D	CF	Artikel	€ / Stck
DN 63 ISO-K		12	38	1,5	ISO-1	ISO-SFK 63	150,-
DN 100 ISO-K		12	63	2	ISO-2	ISO-SFK 100	190,-
DN 160 ISO-K		12	89	2,5	ISO-3	ISO-SFK 160	350,-

- ☐ Ausheiztemperatur max. 350°C (Temperaturanstieg max. 2-3°C / min)
- ☐ Sichtfenster nur mit weichen Cu-Dichtungen montieren
- ☐ Leckrate: <math> < 1 \times 10^{-10} \text{ mbar l s}^{-1}</math>, Druckbereich 1 bar bis 10^{-11} mbar
- ☐ Anti-Reflex Beschichtung, ITO oder Bleiglas auf Anfrage

Fused Silica

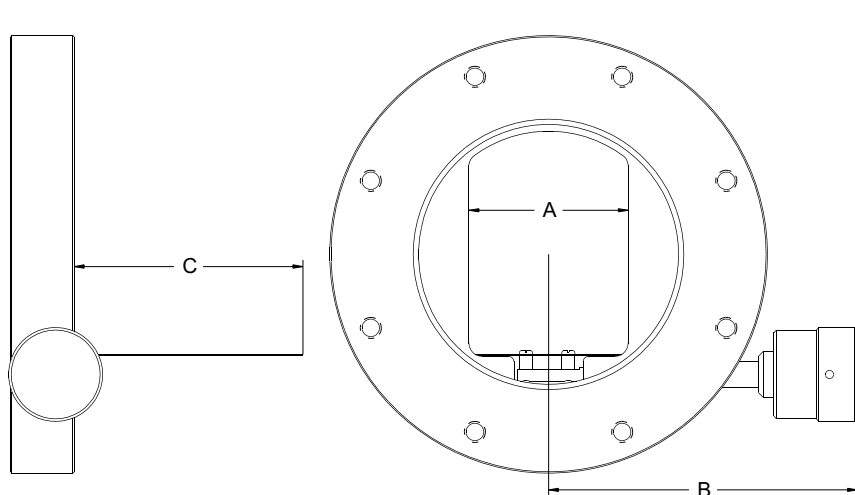


ISO-K Sichtfenster Fused Silica / Kovar-Schweißring						Flansch 1.4306 (304L)	
Nennweite	Maße in mm	A	Ø B	D	CF	Artikel	€ / Stck
DN 63 ISO-K		12	38	1,5	ISO-1	ISO-SFQ 63	390,-
DN 100 ISO-K		12	63	2	ISO-2	ISO-SFQ 100	750,-
DN 160 ISO-K		12	89	2,5	ISO-3	ISO-SFQ 160	1.200,-

- ☐ Oberflächenqualität: 20/10 scratch/dig
- ☐ Parallelität : 3 arc minutes
- ☐ Ebenheit: 8 (/8 bei 632,8 nm im Bereich 75% vom Sichtdurchmesser)
- ☐ Ausheiztemperatur max. 200°C (Temperaturanstieg max. 2-3°C / min)
- ☐ max. 2 J/cm² bei 530 nm
- ☐ Leckrate: <math> < 1 \times 10^{-10} \text{ mbar l s}^{-1}</math>, Druckbereich 1 bar bis 10^{-11} mbar
- ☐ Anti-Reflex Beschichtung, ITO oder Bleiglas auf Anfrage

CF Shutter für Sichtfenster							Flansch 1.4306	
Nennweite	Maße in mm	A	B	C	Gewinde	Flanschdicke	Artikel	€/ Stck
DN 63 ISO-F		40	104	50,5	4 x M8	24	SHISO-F 63 K	855,-
DN 100 ISO-F		60	124	86	8 x M8	24	SHISO-F 100 K	990,-
DN 160 ISO-F		100	154	119,5	8 x M10	24	SHISO-F 160 K	1.240,-

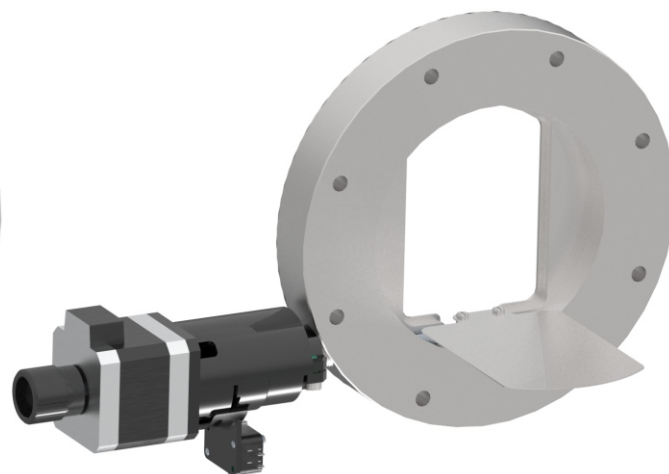
<ul style="list-style-type: none"> ☒ Ausheiztemperatur max. 230°C ☒ Aufpreis Schrittmotorantrieb : SHISO-F ... K S2 + 350,-€ ☒ Endlagenschalter Bausatz: 160,-€ 	<ul style="list-style-type: none"> ☒ Aufpreis Pneumatikantrieb : SHISO-F ... K P + 480,-€ ☒ Positionssensor + 150,-€
--	--



SHISO-F 100 K



SHISO-F 100 K P Pneumatik-Schwenkantrieb mit Positionssensor



SHISO-F 100 K S2 Schrittmotor-Antrieb mit Endlagenschalter