

UHV

# GAS- UND STROM- DURCHFÜHRUNGEN

| CF Durchführungen mit VCR-Verschraubung |             |       |       |       |       |                   | Flansch 1.4429 ESU |         |
|---|-------------|-------|-------|-------|-------|-------------------|--------------------|---------|
| Nennweite                               | Rohr (Zoll) | L1 mm | L2 mm | L3 mm | L4 mm | Anzahl Rohre      | Artikel            | €/ Stck |
| DN 16 CF                                | 1/8"        | -     | -     | 30    | -     | 1                 | CF16VCR1/8         | 99,-    |
| DN 40 CF                                | 1/8"        | -     | -     | 25    | -     | 1                 | CF40VCR1/8         | 109,-   |
| DN 40 CF                                | 1/4"        | -     | -     | 32    | -     | 1                 | CF40VCR1/4         | 124,-   |
| DN 40 CF                                | 1/2"        | -     | -     | 34    | -     | 1                 | CF40VCR1/2         | 147,-   |
| DN 16 CF                                | 1/8"        | 100   | -     | 45    | -     | 1 innen und außen | CF16VCR1/8-1L      | 164,-   |
| DN 40 CF                                | 1/8"        | 100   | -     | 40    | -     | 1 innen und außen | CF40VCR1/8-1L      | 175,-   |
| DN 40 CF                                | 1/4"        | 100   | -     | 85    | -     | 1 innen und außen | CF40VCR1/4-1L      | 191,-   |
| DN 40 CF                                | 1/2"        | 100   | -     | 85    | -     | 1 innen und außen | CF40VCR1/2-1L      | 213,-   |
| DN 40 CF                                | 1/8"        | 55    | 90    | 85    | 50    | 2 innen und außen | CF40VCR1/8-2L      | 225,-   |
| DN 40 CF                                | 1/4"        | 100   | 135   | 85    | 50    | 2 innen und außen | CF40VCR1/4-2L      | 257,-   |

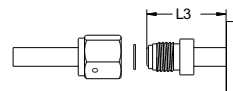
### Flansch thermisch isoliert

|          |      |     |     |     |    |                   |                 |       |
|----------|------|-----|-----|-----|----|-------------------|-----------------|-------|
| DN 16 CF | 1/8" | -   | -   | 60  | -  | 1                 | CF16VCR1/8-I    | 136,- |
| DN 40 CF | 1/8" | -   | -   | 63  | -  | 1                 | CF40VCR1/8-I    | 147,- |
| DN 40 CF | 1/4" | -   | -   | 70  | -  | 1                 | CF40VCR1/4-I    | 164,- |
| DN 40 CF | 1/2" | -   | -   | 73  | -  | 1                 | CF40VCR1/2-I    | 186,- |
| DN 16 CF | 1/8" | 70  | -   | 75  | -  | 1 innen und außen | CF16VCR1/8-1L-I | 202,- |
| DN 40 CF | 1/8" | 70  | -   | 70  | -  | 1 innen und außen | CF40VCR1/8-1L-I | 213,- |
| DN 40 CF | 1/4" | 100 | -   | 85  | -  | 1 innen und außen | CF40VCR1/4-1L-I | 230,- |
| DN 40 CF | 1/2" | 100 | -   | 85  | -  | 1 innen und außen | CF40VCR1/2-1L-I | 252,- |
| DN 40 CF | 1/8" | 70  | 100 | 115 | 85 | 2 innen und außen | CF40VCR1/8-2L-I | 263,- |
| DN 40 CF | 1/4" | 60  | 100 | 125 | 85 | 2 innen und außen | CF40VCR1/4-2L-I | 290,- |

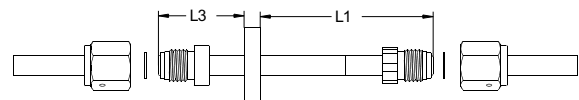
☐ andere Längen für L1 und L2 auf Anfrage



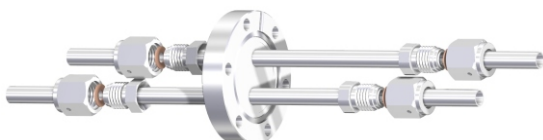
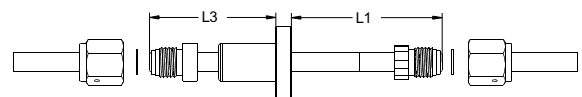
CF16VCR1/4



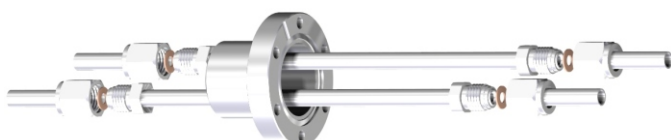
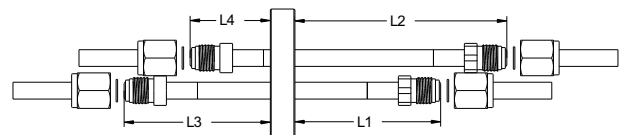
CF16VCR1/8-1L



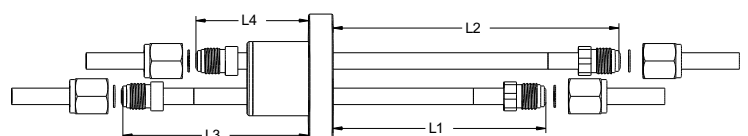
CF16VCR1/4-1L-I



CF40VCR1/4-2L



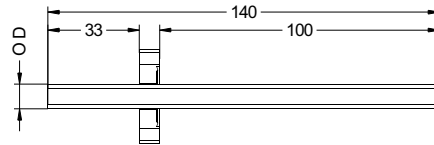
CF40VCR1/4-2L-I



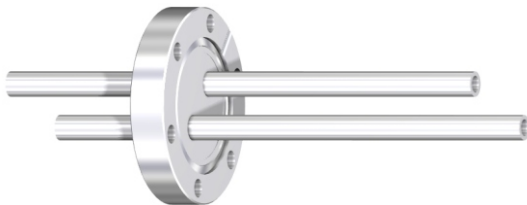
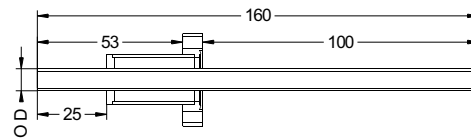
| CF Durchführungen mit Rohr 3 Durchmesser zur Auswahl |            |                          |              |              | Flansch 1.4429 ESU |  |
|--|------------|--------------------------|--------------|--------------|--------------------|--|
| Nennweite  | Maße in mm | Rohraußen-Ø x Wandstärke | Anzahl Rohre | Artikel      | € / Stck           |  |
| DN 16 CF   |            | 10 x 1                   | 1            | CF16/10-R    | 49,-               |  |
| DN 16 CF thermisch isoliert                          |            | 10 x 1                   | 1            | CF16/10-R-I  | 71,-               |  |
| DN 40 CF   |            | 10 x 1                   | 1            | CF40/10-R    | 59,-               |  |
| DN 40 CF thermisch isoliert                          |            | 10 x 1                   | 1            | CF40/10-R-I  | 81,-               |  |
| DN 40 CF   |            | 10 x 1                   | 2            | CF40/10-2R   | 81,-               |  |
| DN 40 CF thermisch isoliert                          |            | 10 x 1                   | 2            | CF40/10-2R-I | 103,-              |  |
| DN 16 CF   |            | 8 x 1                    | 1            | CF16/8-R     | 49,-               |  |
| DN 16 CF thermisch isoliert                          |            | 8 x 1                    | 1            | CF16/8-R-I   | 71,-               |  |
| DN 40 CF   |            | 8 x 1                    | 1            | CF40/8-R     | 59,-               |  |
| DN 40 CF thermisch isoliert                          |            | 8 x 1                    | 1            | CF40/8-R-I   | 81,-               |  |
| DN 40 CF   |            | 8 x 1                    | 2            | CF40/8-2R    | 81,-               |  |
| DN 40 CF thermisch isoliert                          |            | 8 x 1                    | 2            | CF40/8-2R-I  | 103,-              |  |
| DN 16 CF   |            | 6 x 1                    | 1            | CF16/6-R     | 49,-               |  |
| DN 16 CF thermisch isoliert                          |            | 6 x 1                    | 1            | CF16/6-R-I   | 71,-               |  |
| DN 40 CF   |            | 6 x 1                    | 1            | CF40/6-R     | 59,-               |  |
| DN 40 CF thermisch isoliert                          |            | 6 x 1                    | 1            | CF40/6-R-I   | 81,-               |  |
| DN 40 CF   |            | 6 x 1                    | 2            | CF40/6-2R    | 81,-               |  |
| DN 40 CF thermisch isoliert                          |            | 6 x 1                    | 2            | CF40/6-2R-I  | 103,-              |  |



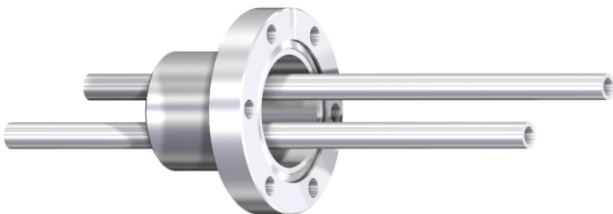
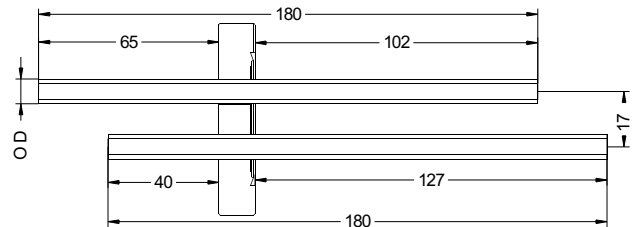
CF16/10-R



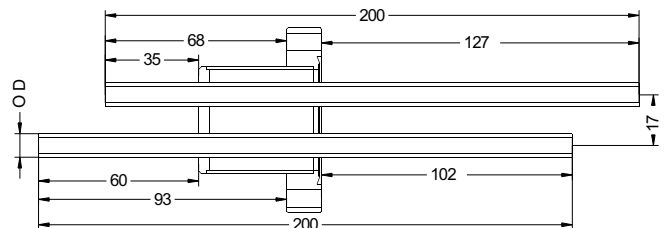
CF16/10-R-I

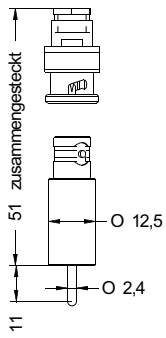


CF40/8-2R



CF40/8-2R-I

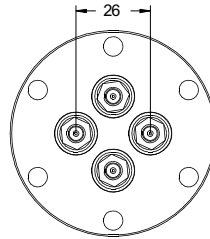
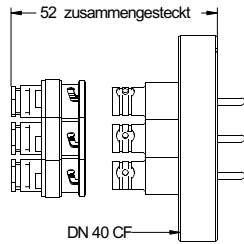




## BNC Durchführungen ohne Stecker

| Basisflansch | ØD  | Anzahl | V <sub>max</sub> | A <sub>max</sub> | Flansch 1.4429 ESU |          |
|--------------|-----|--------|------------------|------------------|--------------------|----------|
|              |     |        |                  |                  | Artikel            | € / Stck |
| ohne Flansch | 2,4 | -      | 0,5 kV           | 3,6 A            | <b>BNC</b>         | 41,-     |
| DN 16 CF     | 2,4 | 1      | 0,5 kV           | 3,6 A            | <b>BNC 16</b>      | 91,-     |
| DN 40 CF     | 2,4 | 1      | 0,5 kV           | 3,6 A            | <b>BNC 40</b>      | 116,-    |
| DN 40 CF     | 2,4 | 2      | 0,5 kV           | 3,6 A            | <b>BNC 40-2</b>    | 172,-    |
| DN 40 CF     | 2,4 | 3      | 0,5 kV           | 3,6 A            | <b>BNC 40-3</b>    | 237,-    |
| DN 40 CF     | 2,4 | 4      | 0,5 kV           | 3,6 A            | <b>BNC 40-4</b>    | 290,-    |

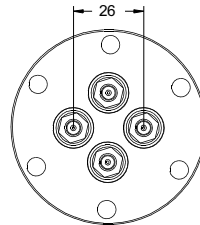
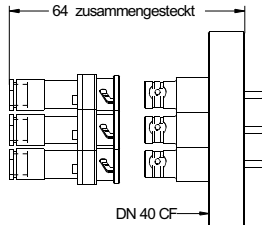
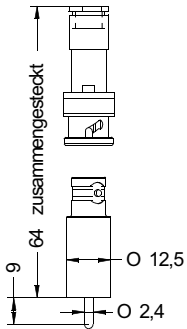
- Ausheiztemperatur max. 450°C
- He-Leckrate: < 1x 10<sup>-10</sup> mbar l s<sup>-1</sup>, Druckbereich 1 bar bis 10<sup>-11</sup> mbar
- BNC-Stecker: 10,- €/Stück Artikel: **BNC-ST**



## MHV Durchführungen ohne Stecker

| Basisflansch | ØD  | Anzahl | V <sub>max</sub> | A <sub>max</sub> | Flansch 1.4429 ESU |          |
|--------------|-----|--------|------------------|------------------|--------------------|----------|
|              |     |        |                  |                  | Artikel            | € / Stck |
| ohne Flansch | 2,4 | -      | 5 kV             | 3,6 A            | <b>MHV</b>         | 46,-     |
| DN 16 CF     | 2,4 | 1      | 5 kV             | 3,6 A            | <b>MHV 16</b>      | 95,-     |
| DN 40 CF     | 2,4 | 1      | 5 kV             | 3,6 A            | <b>MHV 40</b>      | 119,-    |
| DN 40 CF     | 2,4 | 2      | 5 kV             | 3,6 A            | <b>MH 40-2</b>     | 183,-    |
| DN 40 CF     | 2,4 | 3      | 5 kV             | 3,6 A            | <b>MHV 40-3</b>    | 248,-    |
| DN 40 CF     | 2,4 | 4      | 5 kV             | 3,6 A            | <b>MHV 40-4</b>    | 300,-    |

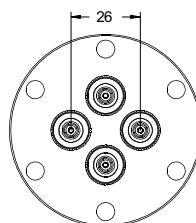
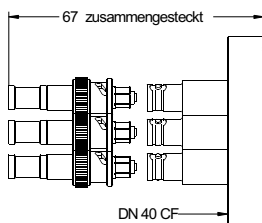
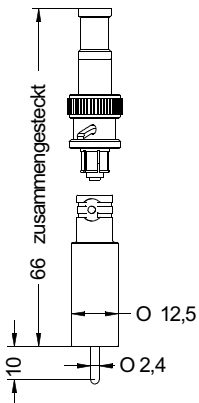
- Ausheiztemperatur max. 450°C
- He-Leckrate: < 1x 10<sup>-10</sup> mbar l s<sup>-1</sup>, Druckbereich 1 bar bis 10<sup>-11</sup> mbar
- MHV-Stecker: 15,- €/Stück Artikel: **MHV-ST**

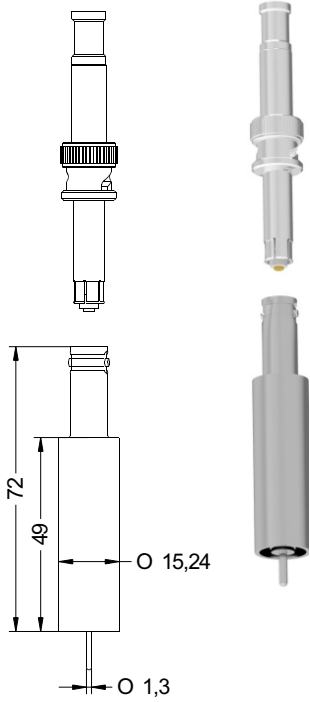


## SHV 5 kV Durchführungen ohne Stecker

| Basisflansch | ØD         | Anzahl | V <sub>max</sub> | A <sub>max</sub> | Flansch 1.4429 ESU |          |
|--------------|------------|--------|------------------|------------------|--------------------|----------|
|              |            |        |                  |                  | Artikel            | € / Stck |
| ohne Flansch | 2,4 Nickel | -      | 5 kV             | 10 A             | <b>SHV</b>         | 75,-     |
| DN 16 CF     | 2,4 Nickel | 1      | 5 kV             | 10 A             | <b>SHV 16</b>      | 124,-    |
| DN 40 CF     | 2,4 Nickel | 1      | 5 kV             | 10 A             | <b>SHV 40</b>      | 145,-    |
| DN 40 CF     | 2,4 Nickel | 2      | 5 kV             | 10 A             | <b>SHV 40-2</b>    | 253,-    |
| DN 40 CF     | 2,4 Nickel | 3      | 5 kV             | 10 A             | <b>SHV 40-3</b>    | 350,-    |
| DN 40 CF     | 2,4 Nickel | 4      | 5 kV             | 10 A             | <b>SHV 40-4</b>    | 430,-    |

- Ausheiztemperatur max. 450°C
- He-Leckrate: < 1x 10<sup>-10</sup> mbar l s<sup>-1</sup>, Druckbereich 1 bar bis 10<sup>-11</sup> mbar
- SHV-5kV Stecker : 42,- €/Stück Artikel: **SHV-ST**

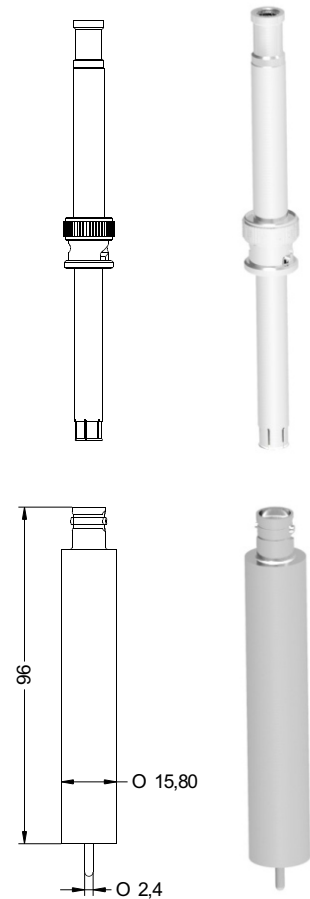
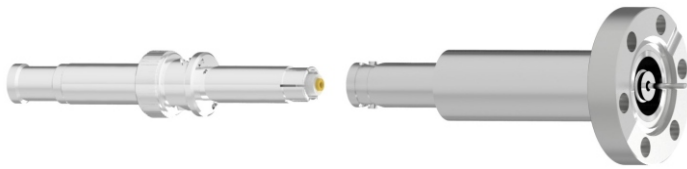
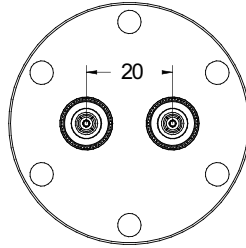




## SHV 10 KV Durchführungen ohne Stecker

| Basisflansch | ØD         | Anzahl | V <sub>max</sub> | A <sub>max</sub> | Flansch 1.4429 ESU   |        |
|--------------|------------|--------|------------------|------------------|----------------------|--------|
|              |            |        |                  |                  | Artikel              | €/Stck |
| ohne Flansch | 1,3 Nickel | -      | 10 kV            | 8,2 A            | <b>SHV 10KV</b>      | 165,-  |
| DN 16 CF     | 1,3 Nickel | 1      | 10 kV            | 8,2 A            | <b>SHV 16-10KV</b>   | 225,-  |
| DN 40 CF     | 1,3 Nickel | 1      | 10 kV            | 8,2 A            | <b>SHV 40-10KV</b>   | 245,-  |
| DN 40 CF     | 1,3 Nickel | 2      | 10 kV            | 8,2 A            | <b>SHV 40-2-10KV</b> | 455,-  |
| DN 40 CF     | 1,3 Nickel | 3      | 10 kV            | 8,2 A            | <b>SHV 40-3-10KV</b> | 640,-  |

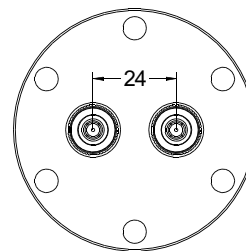
- ❑ Ausheiztemperatur max. 450°C
- ❑ He-Leckrate: < 1x 10<sup>-10</sup> mbar l s<sup>-1</sup>, Druckbereich 1 bar bis 10<sup>-11</sup> mbar
- ❑ SHV-10kV Stecker : 140,- €/Stück Artikel: **SHV-10KV-ST**



## SHV 20 KV Durchführungen ohne Stecker

| Basisflansch | ØD         | Anzahl | V <sub>max</sub> | A <sub>max</sub> | Flansch 1.4429 ESU   |        |
|--------------|------------|--------|------------------|------------------|----------------------|--------|
|              |            |        |                  |                  | Artikel              | €/Stck |
| ohne Flansch | 2,4 Nickel | -      | 20 kV            | 16,5 A           | <b>SHV 20KV</b>      | 265,-  |
| DN 16 CF     | 2,4 Nickel | 1      | 20 kV            | 16,5 A           | <b>SHV 16-20KV</b>   | 320,-  |
| DN 40 CF     | 2,4 Nickel | 1      | 20 kV            | 16,5 A           | <b>SHV 40-20KV</b>   | 355,-  |
| DN 40 CF     | 2,4 Nickel | 2      | 20 kV            | 16,5 A           | <b>SHV 40-2-20KV</b> | 635,-  |

- ❑ Ausheiztemperatur max. 450°C
- ❑ He-Leckrate: < 1x 10<sup>-10</sup> mbar l s<sup>-1</sup>, Druckbereich 1 bar bis 10<sup>-11</sup> mbar
- ❑ SHV-10kV Stecker : 280,- €/Stück Artikel: **SHV-20KV-ST**



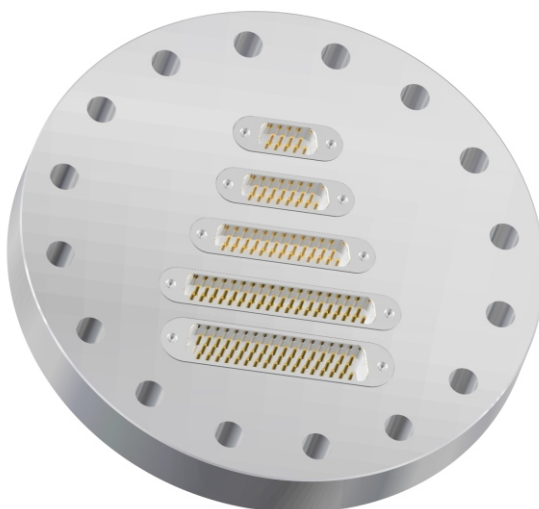
| Sub-D Durchführungen |                 |                                    |
|----------------------|-----------------|------------------------------------|
| Nennweiten           | Flansch         | Kombiantion Flansch / Durchführung |
| DN 40                | CF / ISO-K / KF | SUB 9                              |
| DN 63                | CF / ISO-K      | SUB 9, 15, 25                      |
| DN 100               | CF / ISO-K      | SUB 9, 15, 25, 37, 50              |
| DN 160               | CF / ISO-K      | SUB 9, 15, 25, 37, 50              |
| DN 200               | CF / ISO-K      | SUB 9, 15, 25, 37, 50              |

|  |  |
|--|--|
| <ul style="list-style-type: none"> <li>☐ Temperatur -269°C bis 350°C</li> <li>☐ Spannung: 700VAC / 445VDC Strom: max. 5A / Pin</li> <li>☐ Flanschmaterial: 1.4306, 1.4429 ESU (optional)</li> <li>☐ Kontakt: Kupfer-Beryllium (Nickel-Gold beschichtet)</li> <li>☐ Isolation: Keramik</li> </ul> | <ul style="list-style-type: none"> <li>☐ Vakuum-/Atmosphäreseitig: Male</li> <li>☐ Kompatibel mit MIL-DTL-24308/3</li> <li>☐ He-Leckrate: &lt; 1x 10<sup>-10</sup> mbar l s<sup>-1</sup>, Druckbereich 1 bar bis 10<sup>-11</sup> mbar</li> <li>☐ <b>Artikelnummer:</b>SUBD "Pinzahl"MM-"Flansch-Nennweite" (Bsp.: <b>SUBD 25MM63</b>)</li> <li>☐</li> </ul> |
|--|--|

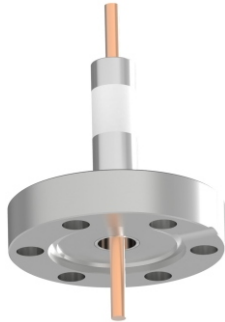
| Sub-D Zubehör                        |   |                       |
|--------------------------------------|---|-----------------------|
| Artikel                              | Material  | Passend für           |
| Kabel mit Stecker (atmosphäreseitig) | -----   | SUB 9, 15, 25, 37, 50 |
| Kabel mit Stecker (vakuumseitig)     | Kontakt: CuBe (Nickel-Gold beschichtet)<br>Isolation: Kapton,PEEK<br>Schrauben/Muttern: Edelstahl | SUB 9, 15, 25, 37, 50 |

- ☐ Standard-Kabellänge 19" (weitere Längen möglich)
- ☐ **Artikelnummer vakuumseitig:** SUBD ... KV (Bsp.: **SUBD 25KV**)
- ☐ **Artikelnummer atmosphäreseitig:** SUBD ... KA (Bsp.: **SUBD 25KA**)

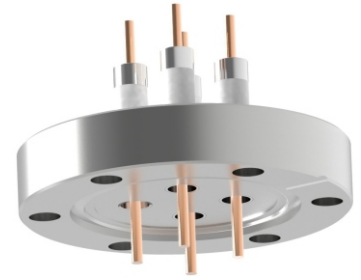
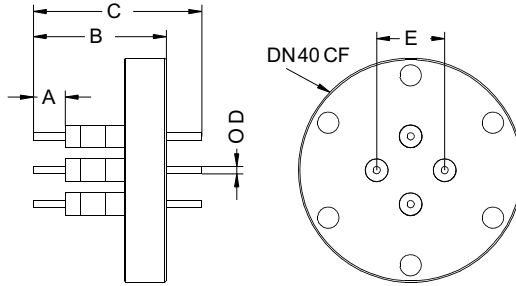


| CF Stromdurchführungen |               | SD        |           | Maße in mm |    |    |                 |    | Flansch 1.4429 ESU |         |
|------------------------|---------------|-----------|-----------|------------|----|----|-----------------|----|--------------------|---------|
| Basisflansch           | Anzahl Leiter | $V_{max}$ | $A_{max}$ | A          | B  | C  | $\varnothing D$ | E  | Artikel            | €/ Stck |
| DN 16 CF               | 1 Cu          | 4 kV      | 25 A      | 10         | 41 | 52 | 2               |    | <b>SD 4-1-16</b>   | 125,-   |
| DN 16 CF               | 1 Cu          | 6 kV      | 60 A      | 10         | 47 | 58 | 4               |    | <b>SD 6-1-16</b>   | 150,-   |
| DN 40 CF               | 2 Cu          | 4 kV      | 25 A      | 10         | 41 | 52 | 2               | 26 | <b>SD 4-2-40</b>   | 235,-   |
| DN 40 CF               | 4 Cu          | 4 kV      | 25 A      | 10         | 41 | 52 | 2               | 26 | <b>SD 4-4-40</b>   | 395,-   |
| DN 40 CF               | 2 Cu          | 6 kV      | 60 A      | 10         | 47 | 58 | 4               | 26 | <b>SD 6-2-40</b>   | 275,-   |
| DN 40 CF               | 4 Cu          | 6 kV      | 60 A      | 10         | 47 | 58 | 4               | 26 | <b>SD 6-4-40</b>   | 485,-   |

- ☐ Ausheiztemperatur max. 400 °C
- ☐ He-Leckrate:  $< 1 \times 10^{-10}$  mbar l s<sup>-1</sup>, Druckbereich 1 bar bis 10<sup>-11</sup> mbar
- ☐ weitere Stromdurchführungen auf Anfrage

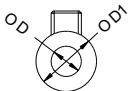
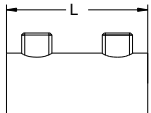


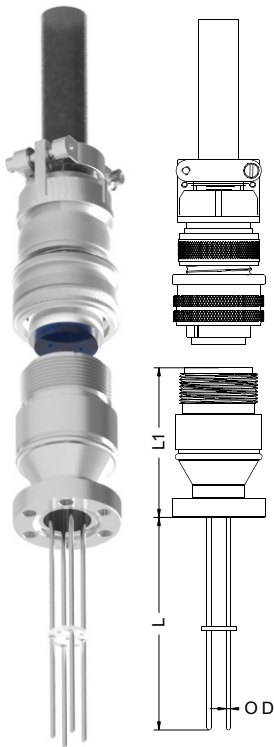
SD 4-1-16



SD 4-4-40

| Klemmbuchsen            |              |      |           | Beryllium Cu |         |
|-------------------------|--------------|------|-----------|--------------|---------|
| $\varnothing D$ (D1) mm | Stück / Satz | L mm | $A_{max}$ | Artikel      | €/ Satz |
| 1,0 (3,2)               | 5            | 13   | 13 A      | <b>KB 1</b>  | 42,-    |
| 1,3 (4,8)               | 5            | 13   | 20 A      | <b>KB 2</b>  | 42,-    |
| 1,6 (4,8)               | 5            | 13   | 20 A      | <b>KB 3</b>  | 42,-    |
| 2,4 (6,4)               | 5            | 14   | 25 A      | <b>KB 4</b>  | 53,-    |
| 3,2 (6,4)               | 5            | 16   | 25 A      | <b>KB 5</b>  | 53,-    |
| 6,4 (12,5)              | 5            | 25   | 35 A      | <b>KB 6</b>  | 85,-    |





| CF Stromdurchführungen ID mit Außenstecker |               |         |      |       |                  |                  | Flansch 1.4301   |         |
|--|---------------|---------|------|-------|------------------|------------------|------------------|---------|
| Basis-flansch                              | Anzahl Leiter | Ø Da mm | L mm | L1 mm | V <sub>max</sub> | A <sub>max</sub> | Artikel          | €/ Stck |
| DN 16 CF                                   | 4 Alumel      | 1,6     | 69   | 66    | 700 V            | 5 A              | <b>ID 4-16S</b>  | 345,-   |
| DN 16 CF                                   | 6 Alumel      | 1,6     | 69   | 66    | 700 V            | 5 A              | <b>ID 6-16S</b>  | 375,-   |
| DN 16 CF                                   | 10 Alumel     | 1,6     | 69   | 66    | 700 V            | 5 A              | <b>ID 10-16S</b> | 595,-   |
| DN 40 CF                                   | 4 Alumel      | 1,6     | 69   | 66    | 700 V            | 5 A              | <b>ID 4-40S</b>  | 385,-   |
| DN 40 CF                                   | 6 Alumel      | 1,6     | 69   | 66    | 700 V            | 5 A              | <b>ID 6-40S</b>  | 425,-   |
| DN 40 CF                                   | 10 Alumel     | 1,6     | 69   | 66    | 700 V            | 5 A              | <b>ID 10-40S</b> | 655,-   |

- ☐ Ausheiztemperatur max. 400 °C ohne Stecker 125 °C mit Stecker
- ☐ He-Leckrate: < 1x 10<sup>-10</sup> mbar l s<sup>-1</sup>, Druckbereich 1 bar bis 10<sup>-11</sup> mbar

| CF Hochstrom-Durchführungen ID mit Außenstecker |               |         |      |       |                  |                  | Flansch 1.4301     |         |
|---|---------------|---------|------|-------|------------------|------------------|--------------------|---------|
| Basis-flansch                                   | Anzahl Leiter | Ø Da mm | L mm | L1 mm | V <sub>max</sub> | A <sub>max</sub> | Artikel            | €/ Stck |
| DN 16 CF  | 2 Nickel      | 2,4     | 69   | 66    | 700 V            | 16 A             | <b>ID 2-16-16S</b> | 405,-   |
| DN 16 CF  | 4 Nickel      | 2,4     | 69   | 66    | 700 V            | 16 A             | <b>ID 4-16-16S</b> | 505,-   |
| DN 16 CF  | 2 Molybdän    | 2,4     | 69   | 66    | 700 V            | 23 A             | <b>ID 2-16-23S</b> | 460,-   |
| DN 16 CF  | 4 Molybdän    | 2,4     | 69   | 66    | 700 V            | 23 A             | <b>ID 4-16-23S</b> | 600,-   |

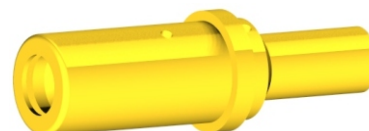
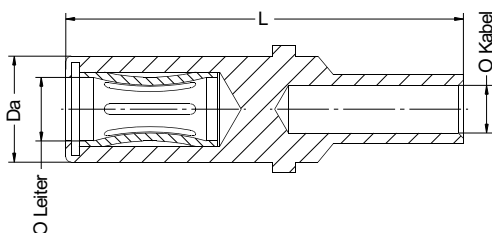
- ☐ Ausheiztemperatur max. 400 °C ohne Stecker 125 °C mit Stecker
- ☐ He-Leckrate: < 1x 10<sup>-10</sup> mbar l s<sup>-1</sup>, Druckbereich 1 bar bis 10<sup>-11</sup> mbar

| CF Hochspannungs-Durchführungen ID mit Außenstecker |               |         |      |       |                  |                  | Flansch 1.4301     |         |
|---|---------------|---------|------|-------|------------------|------------------|--------------------|---------|
| Basis-flansch                                       | Anzahl Leiter | Ø Da mm | L mm | L1 mm | V <sub>max</sub> | A <sub>max</sub> | Artikel            | €/ Stck |
| DN 16 CF  | 2 Molybdän    | 1,3     | 69   | 66    | 12 KV            | 7,5 A            | <b>ID 2-16S-HV</b> | 820,-   |
| DN 16 CF  | 4 Molybdän    | 1,3     | 69   | 66    | 12 KV            | 7,5 A            | <b>ID 4-16S-HV</b> | 855,-   |
| DN 40 CF  | 2 Molybdän    | 1,3     | 69   | 66    | 12 KV            | 7,5 A            | <b>ID 2-40S-HV</b> | 900,-   |
| DN 40 CF  | 4 Molybdän    | 1,3     | 69   | 66    | 12 KV            | 7,5 A            | <b>ID 4-40S-HV</b> | 955,-   |

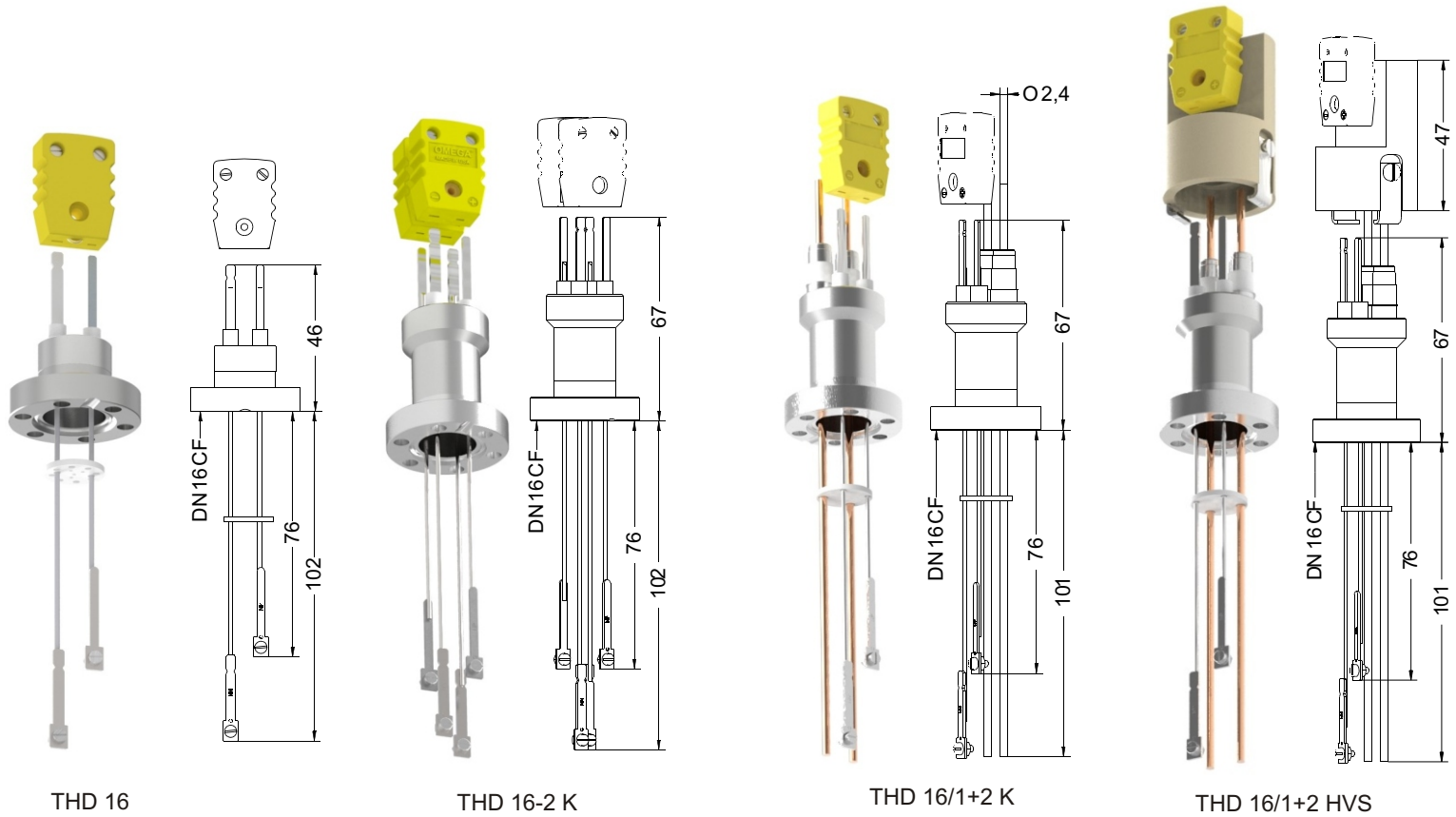
- ☐ Ausheiztemperatur max. 400 °C ohne Stecker 125 °C mit Stecker
- ☐ He-Leckrate: < 1x 10<sup>-10</sup> mbar l s<sup>-1</sup>, Druckbereich 1 bar bis 10<sup>-11</sup> mbar

| Crimp - Kontakte für Stromdurchführungen ID, vakuumseitig |             |              |                |                    |      |        | Cu-OFE vergoldet |         |
|---|-------------|--------------|----------------|--------------------|------|--------|------------------|---------|
| Ø Da mm   | Ø Leiter mm | Kabel - Ø mm | Kontaktlamelle | Max. Betriebstemp. | L mm | A max. | Artikel          | €/ Satz |
| 3   | 1,6         | 0,5 - 1      | CuBe vergoldet | 150 °C             | 12   | 10 A   | <b>CS 1</b>      | 80,-    |
| 4   | 2,4         | 0,8 - 1,4    | NiBe vergoldet | 250 °C             | 15   | 20 A   | <b>CS 2</b>      | 95,-    |

- ☐ Satz = 5 Stück
- ☐ Nennstrom abhängig von Umgebungstemperatur und Leiter (siehe VDE 0298-4)







THD 16

THD 16-2 K

THD 16/1+2 K

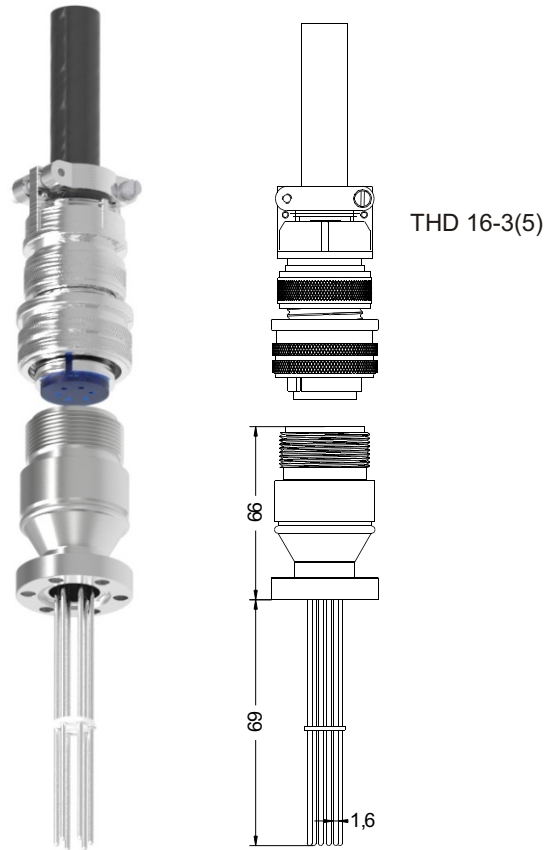
THD 16/1+2 HVS

| CF Spade-Type Thermoelement Durchführungen mit Außenstecker |                   |                   |              | Flansch 1.4306 |         |
|---|-------------------|-------------------|--------------|----------------|---------|
| Basisflansch  | Leiter            | Typ Thermoelement | Anzahl Paare | Artikel        | €/ Stck |
| DN 16 CF  | Chromel / Alumel  | Typ K             | 1            | THD 16 K       | 172,-   |
| DN 16 CF  | Chromel / Alumel  | Typ K             | 2            | THD 16-2 K     | 288,-   |
| DN 40 CF  | Chromel / Alumel  | Typ K             | 1            | THD 40 K       | 218,-   |
| DN 40 CF  | Chromel / Alumel  | Typ K             | 2            | THD 40-2 K     | 325,-   |
| DN 16 CF  | Wolfram / Rhenium | Typ C             | 1            | THD 16 C       | 195,-   |
| DN 16 CF  | Wolfram / Rhenium | Typ C             | 2            | THD 16-2 C     | 335,-   |

- ☐ Ausheiztemperatur max. 400 °C ohne Stecker
- ☐ He-Leckrate: <math> < 1 \times 10^{-10} \text{ mbar l s}^{-1}</math>, Druckbereich 1 bar bis <math> 10^{-11} \text{ mbar}</math>

| CF Kombi - Durchführungen (TC + Power) TC mit Außenstecker |                       |                   |              | Flansch 1.4306 |         |
|--|-----------------------|-------------------|--------------|----------------|---------|
| Basisflansch   | Leiter                | Typ Thermoelement | Anzahl Paare | Artikel        | €/ Stck |
| DN 16 CF   | 2 x CU Ø2,4 (5KV 55A) | Typ K             | 1 + 2Cu      | THD 16 / 1+2 K | 390,-   |
| DN 40 CF   | 2 x CU Ø2,4 (5KV 55A) | Typ K             | 1 + 2Cu      | THD 40 / 1+2 K | 470,-   |
| DN 16 CF   | 2 x CU Ø2,4 (5KV 55A) | Typ C             | 1 + 2Cu      | THD 16 / 1+2 C | 405,-   |

- ☐ Ausheiztemperatur max. 400 °C ohne Stecker
- ☐ He-Leckrate: <math> < 1 \times 10^{-10} \text{ mbar l s}^{-1}</math>, Druckbereich 1 bar bis <math> 10^{-11} \text{ mbar}</math>
- ☐ Außenstecker PEEK für TC+Power: auf Anfrage **HVS-THD 16/1+2**



| CF Multipin Thermoelement Durchführungen mit Außenstecker |                  |        |              |     |       | Flansch 1.4301      |         |
|---|------------------|--------|--------------|-----|-------|---------------------|---------|
| Basisflansch  | Leiter           | TC Typ | Anzahl Paare | Ø D | L min | Artikel             | €/ Stck |
| DN 16 CF  | Chromel / Alumel | K      | 2            | 1,6 | 69    | <b>THD-M 2K-16S</b> | 465,-   |
| DN 40 CF  | Chromel / Alumel | K      | 2            | 1,6 | 69    | <b>THD-M 2K-40S</b> | 525,-   |
| DN 16 CF  | Chromel / Alumel | K      | 3            | 1,6 | 69    | <b>THD-M 3K-16S</b> | 550,-   |
| DN 40 CF  | Chromel / Alumel | K      | 3            | 1,6 | 69    | <b>THD-M 3K-40S</b> | 600,-   |
| DN 16 CF  | Chromel / Alumel | K      | 5            | 1,6 | 69    | <b>THD-M 5K-16S</b> | 685,-   |
| DN 40 CF  | Chromel / Alumel | K      | 5            | 1,6 | 69    | <b>THD-M 5K-40S</b> | 745,-   |

- ☐ Ausheiztemperatur max. 400 °C ohne Stecker, 125 °C mit Stecker
- ☐ He-Leckrate: <math>1 \times 10^{-10}</math> mbar l s<sup>-1</sup>, Druckbereich 1 bar bis 10<sup>-11</sup> mbar
- ☐ vakuumseitige Crimpkontakte auf Anfrage: **CS-A / CS-C**